

Organigramma

POAS 2022 - 2024

Aggiornamento 2026




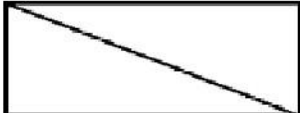

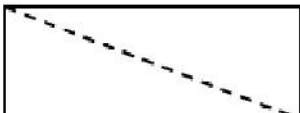


726 - ASST DI CREMA

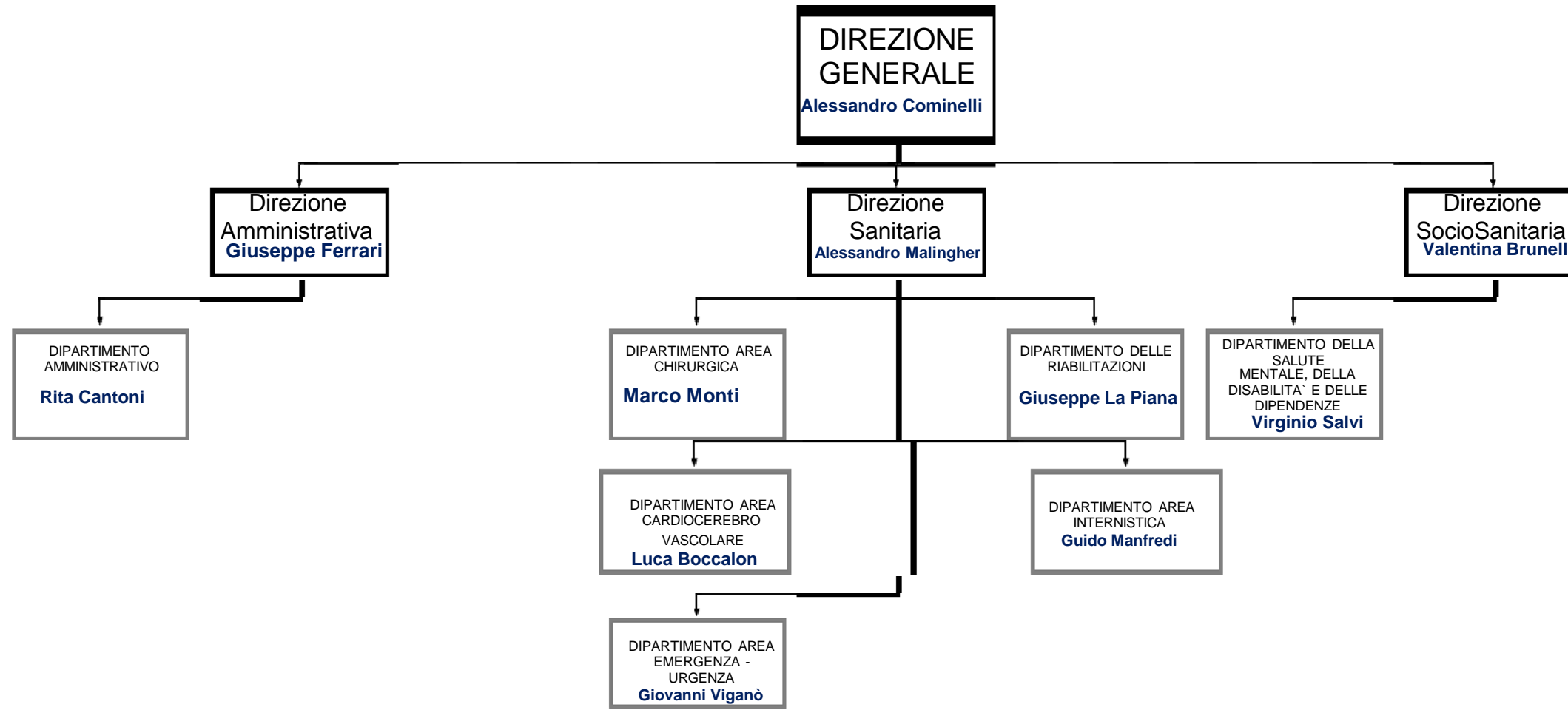
Sistema Socio Sanitario

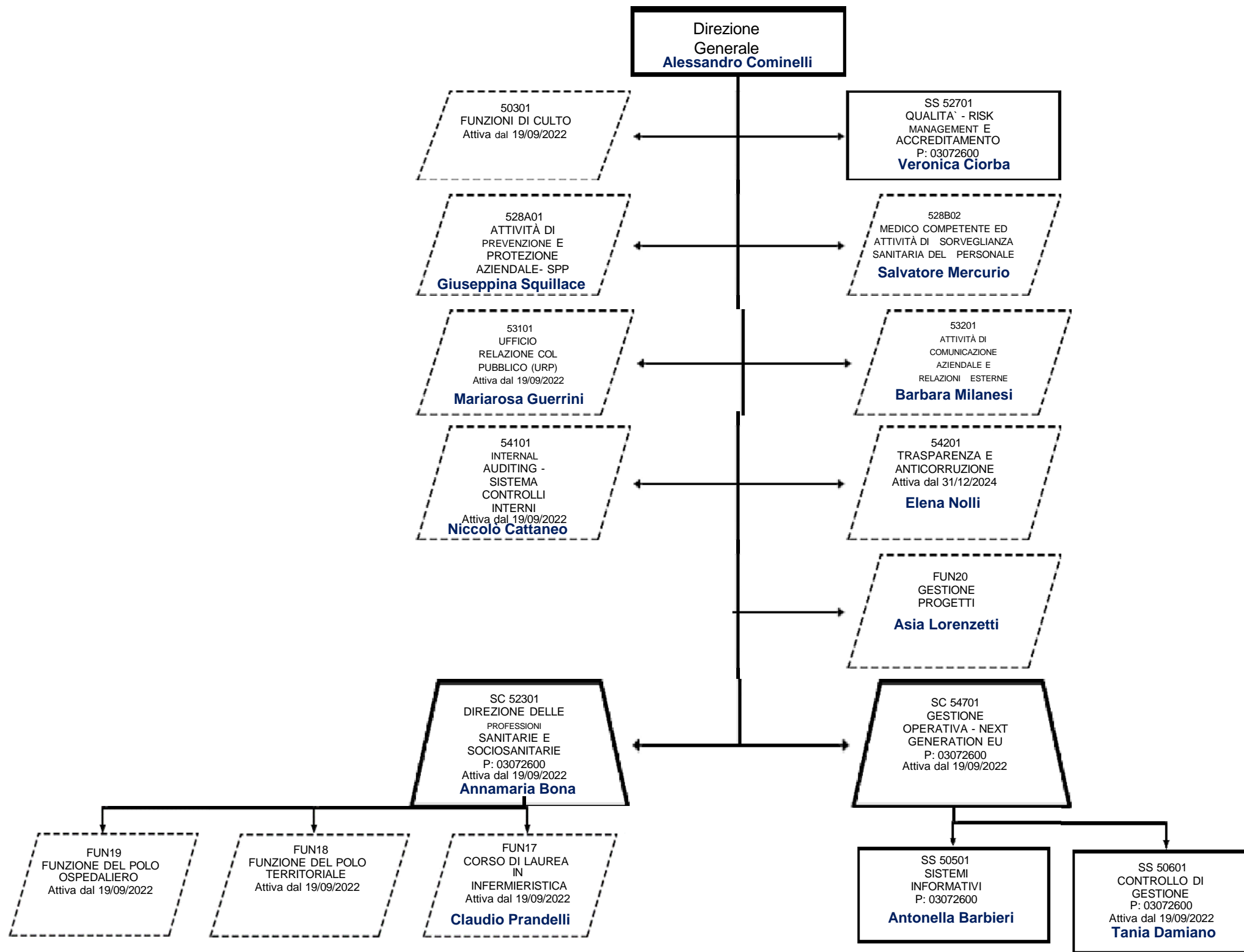


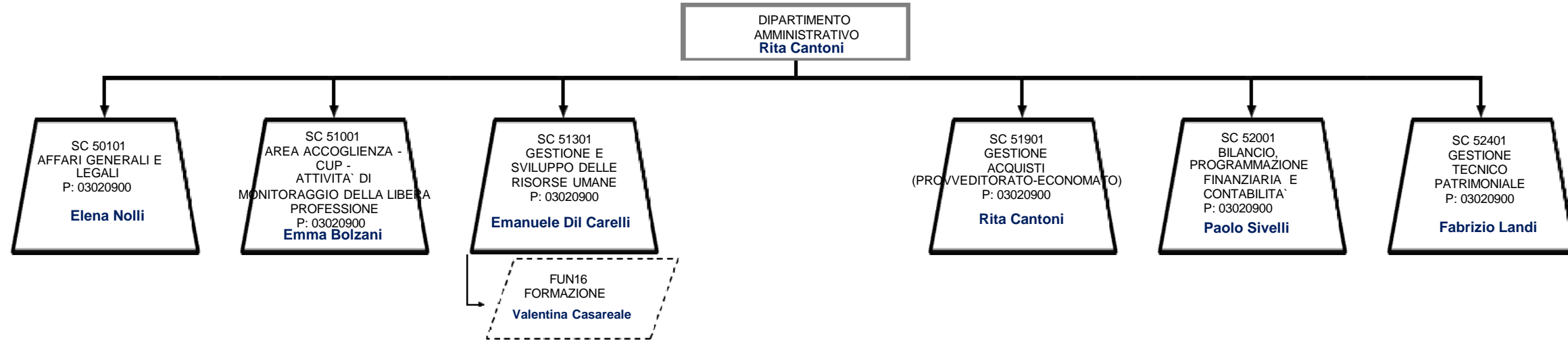
Regione
Lombardia

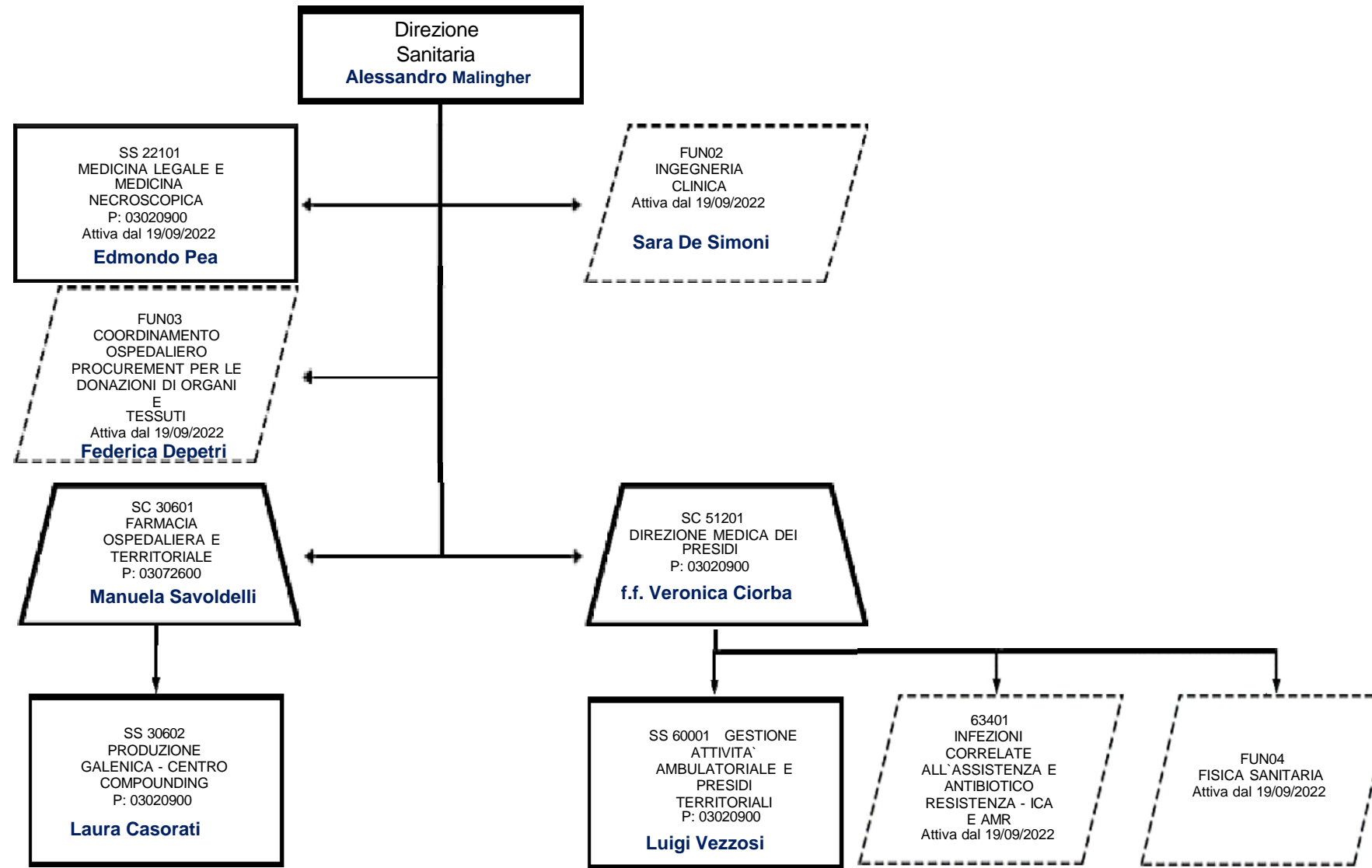
Legenda

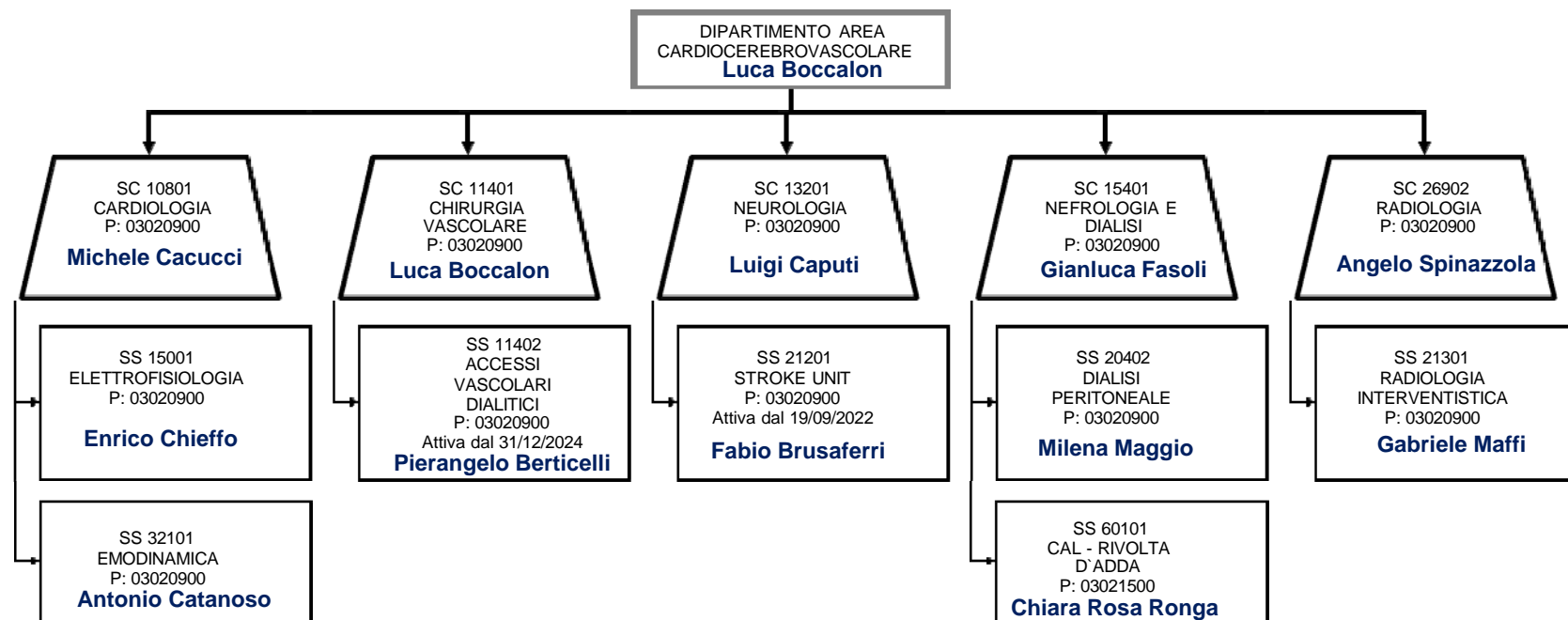
	Dipartimento Gestionale
	Dipartimento Funzionale
	SC – Struttura Complessa
	SSD – Struttura Semplice Dipartimentale
	SS – Struttura Semplice
	SD – Struttura Semplice Distrettuale
	Funzione
	Relazione Funzionale

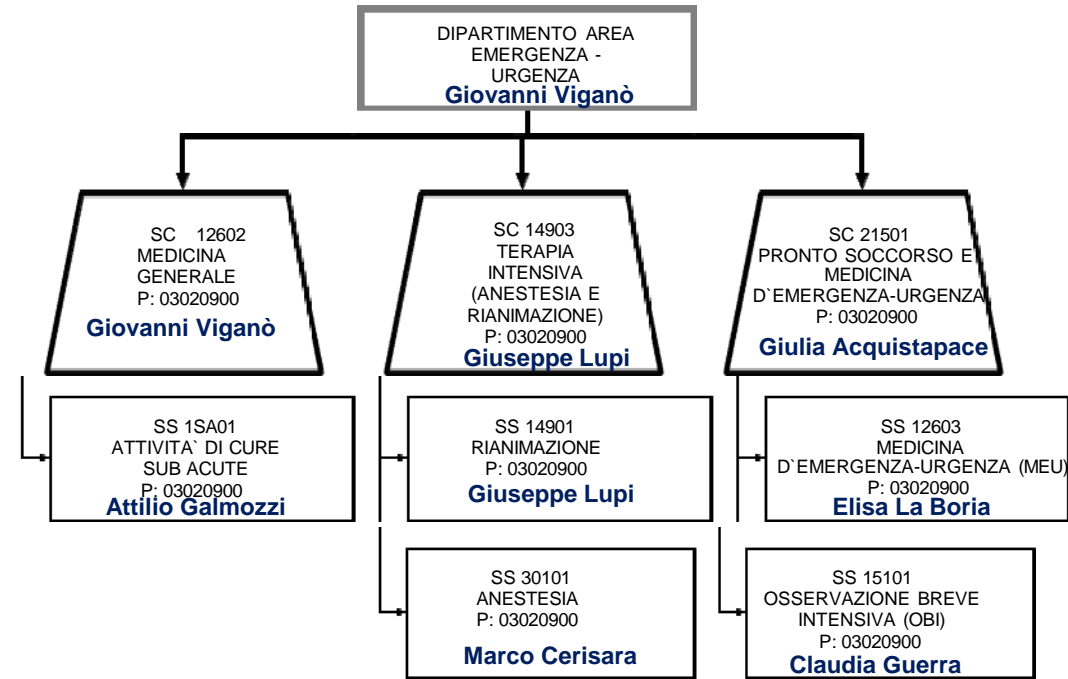


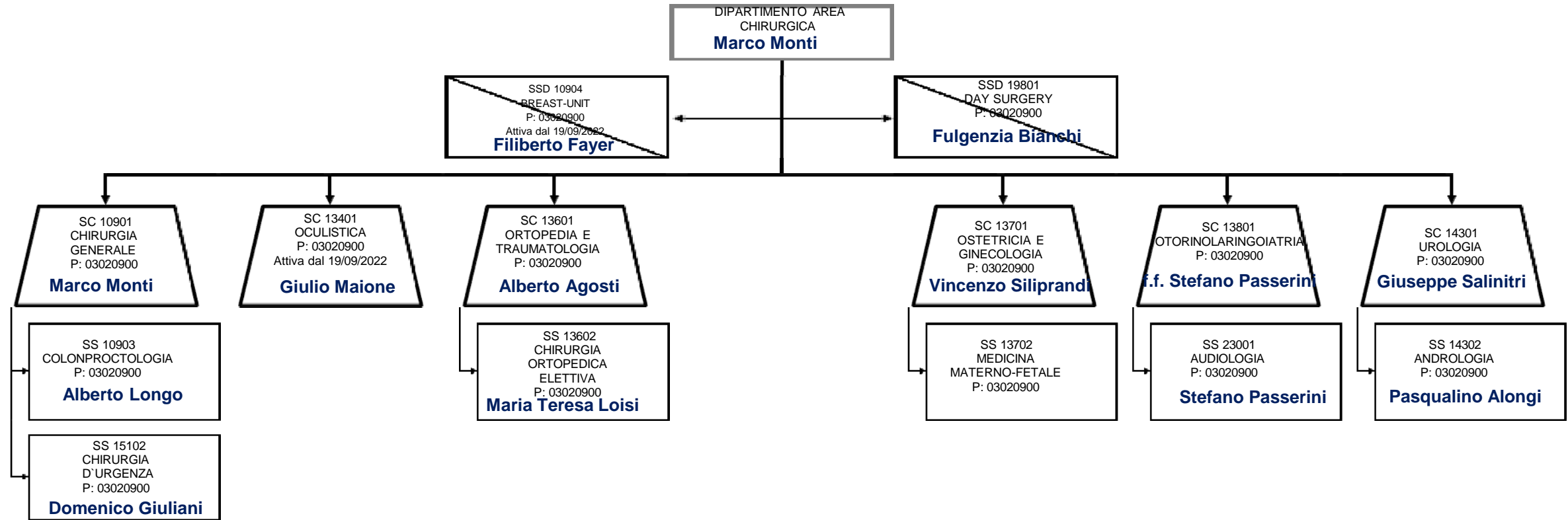


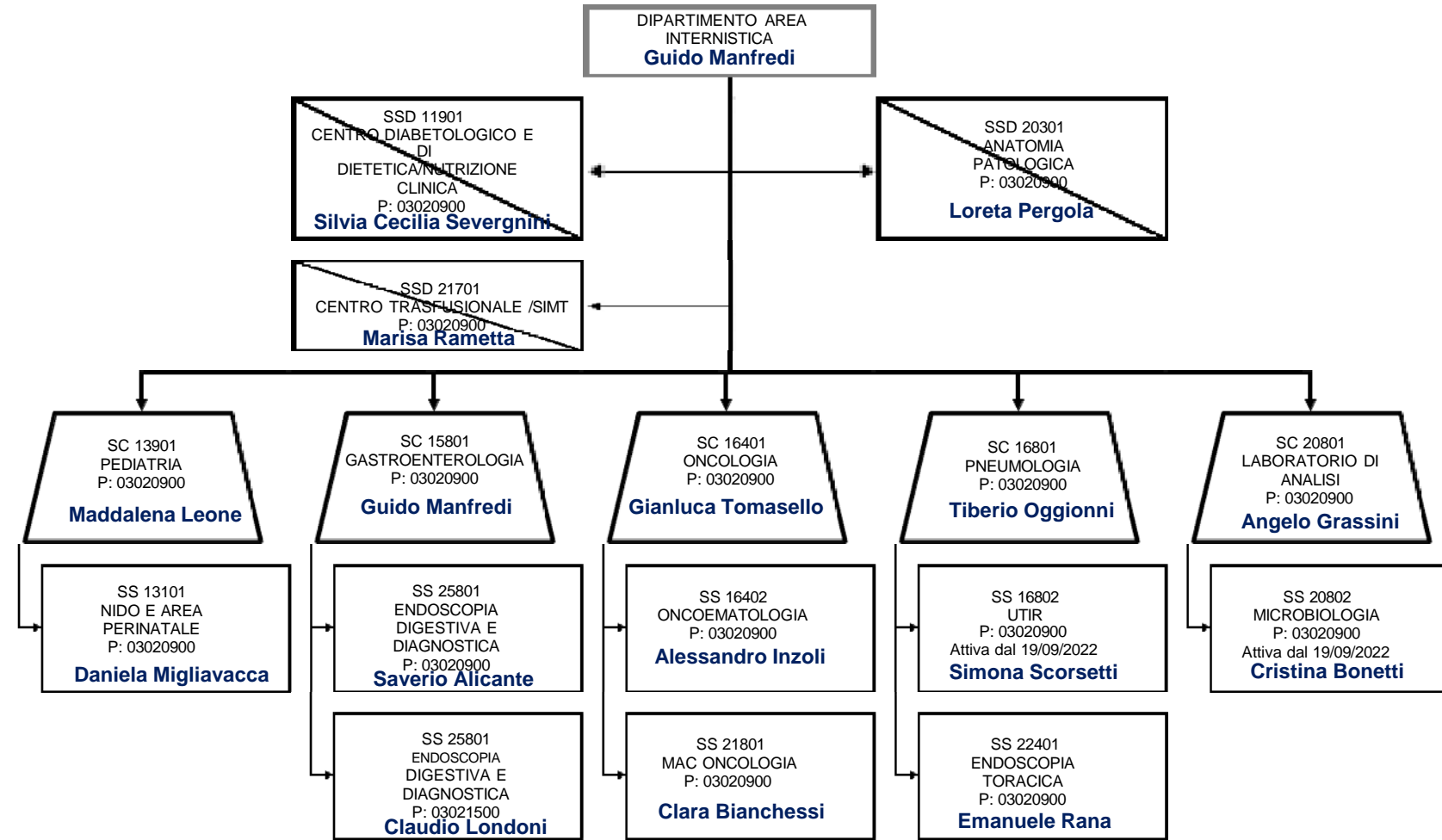


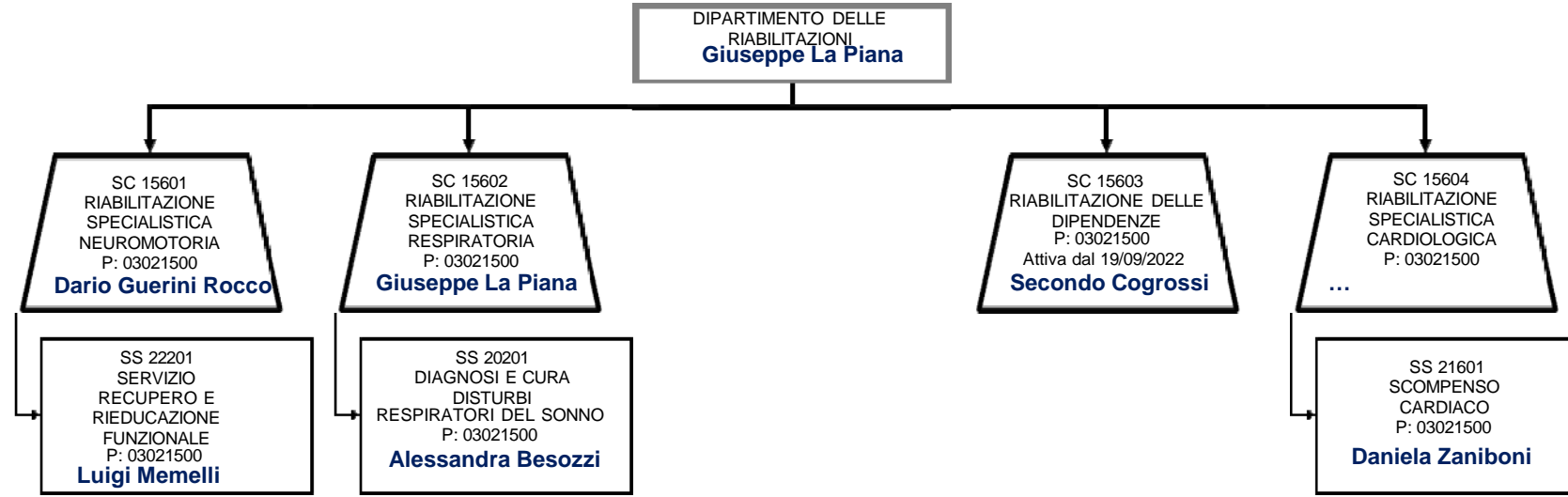


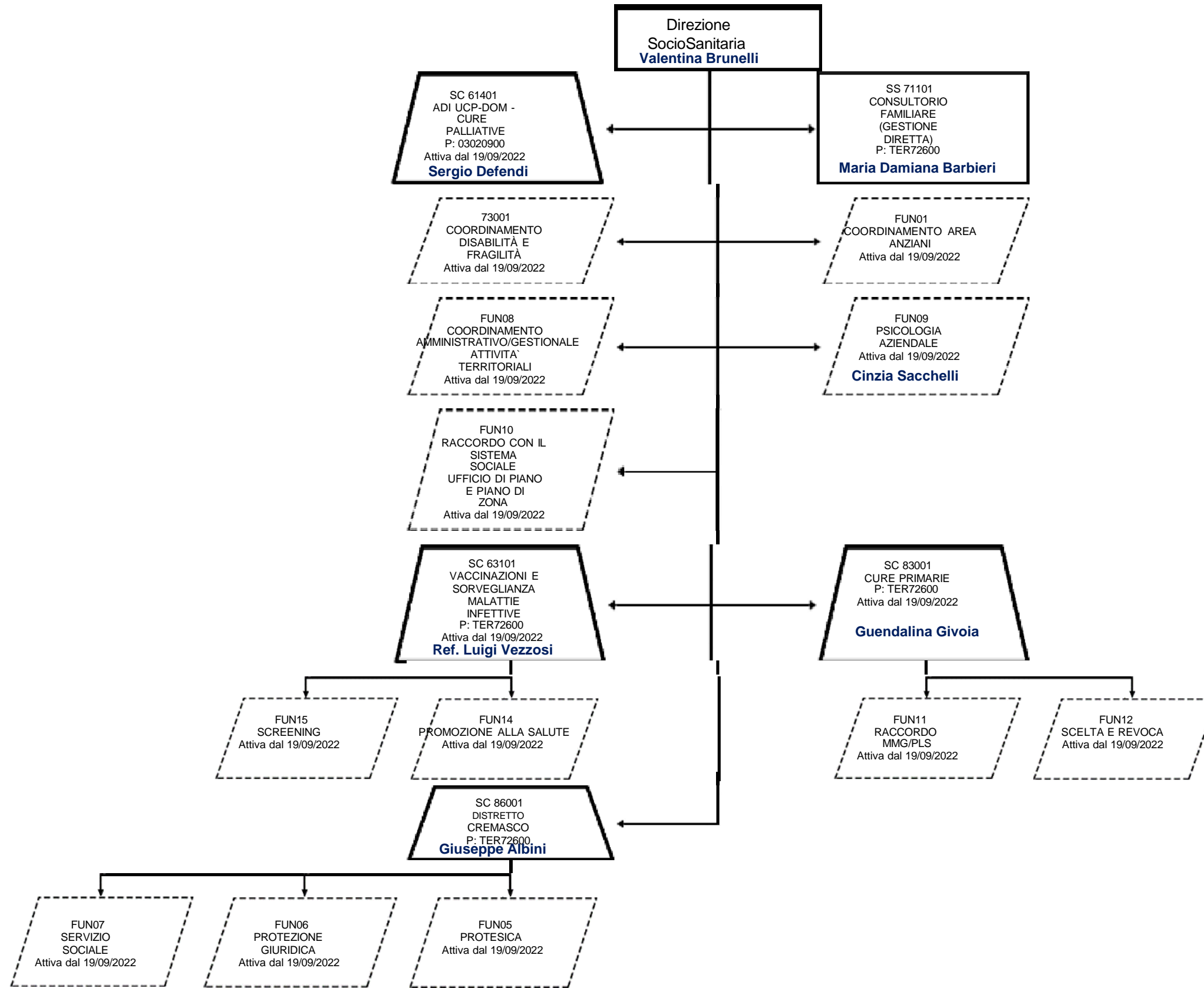












ORGANIGRAMMA PROPOSTO - 726 ASST DI CREMA - Direzione SocioSanitaria - DIPARTIMENTO DELLA SALUTE MENTALE, DELLA DISABILITA' E DELLE DIPENDENZE Staff del DIPARTIMENTO DELLA SALUTE MENTALE, DELLA DISABILITA' E DELLE DIPENDENZE

